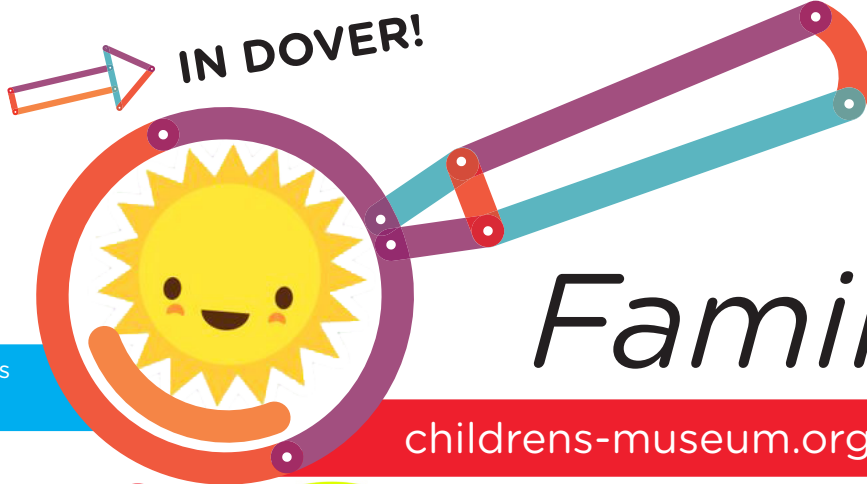


# CHILDREN'S MUSEUM

of NEW HAMPSHIRE



HOURS: Tue. - Sat. 10 a.m.-5 p.m.  
Sunday, noon-5 p.m.



JUNE

## Family Fun!

All programs are free with museum admission unless otherwise noted. Members always get in FREE!

[childrens-museum.org](http://childrens-museum.org) 603-742-2002

## CALL FOR MAKERS!

### Dover Mini Maker Faire®



**Deadline for applications is Friday, August 4**

Join us at the 5th annual Dover Mini Maker Faire, an all ages celebration of creativity and innovation. The Faire takes place in and around the Children's Museum of New Hampshire in downtown Dover, NH on Saturday, August 26 from 10am-4pm. Whether you are an engineer, a scientist, a tinkerer or an artisan, we want to see what you do! Sign up to be a Maker presenter, performer, sponsor, to give a workshop or to sell



## CARDBOARD CHALLENGE

**Sign up! It's FREE!**

This year, the museum is inviting individuals, groups, schools, teams, businesses and families to sign up for a creative challenge of their own. Using only cardboard, you are invited to create a sculpture, working machine, interactive game or anything else you can dream up, and it will be displayed at the 5th annual Dover Mini Maker Faire on Saturday, August 26, 2017. It's easy and free to sign up to participate in the Cardboard Challenge, and it's a great way to work on a collaborative project this spring and summer.



Visit <http://dover.makerfaire.com> to learn more or to sign up!

### First Friday \$3 After 3pm

FRIDAY, JUNE 2, 3-7pm

Enjoy the museum for only \$3 per person! Library passes and other discounts do not apply during this event.

### Exploring Our Way Autism Partnership Program

SUNDAY, JUNE 4, 10am-12pm

Families with children on the autism spectrum are invited to the museum for a free visit and to enjoy family time at the museum in a safe, understanding environment. Children must be accompanied by an adult and siblings are welcome. *Exploring Our Way is generously supported by H.O.P.E. Behavioral Consulting, the Finlay Foundation, Eversource and Kennebunk Savings Bank.*

### Anyone Can Grow Food: 3 Sisters Nature


TUESDAY, JUNE 6, 11am & 3pm

Interested in vegetable gardening as a family activity? Join us and visit our vegetable and herb garden, and learn the Wabanaki tradition and science behind why Native Americans planted their gardens in mounds.

### Wee Ones Wednesday

WEDNESDAY, JUNE 7 & 14, 9:45am & 10:45am

Interactive drop-in program for kids ages 2-4. Adult/child pair \$7 for Members, \$10 for Non-members. Additional children in a family are \$5 each for Members and \$8 each for Non-members.

Generously sponsored by:  Bank of New Hampshire  
*New Hampshire's best bank*

### First Friends Playgroup & Baby Storytime

WEDNESDAY, JUNE 7 & 14, 9:30-10:30am

A drop-in opportunity for parents and babies/toddlers (ages 6 months to two years) to play. This program is free for museum Members and regular admission applies for Non-members.

### Alzheimer's Café

THURSDAY, JUNE 15, 2-4pm

People living with Alzheimer's disease and their caregivers are welcome to attend this supportive gathering. *Sponsored by Seacoast Rotary, Ouellett and Furbush Family Fund of the NH Charitable Foundation and Abbie Moseley Trust.*

### Father's Day

SUNDAY, JUNE 18, Noon-5pm

In honor of Father's Day, all fathers and grandfathers are granted free admission for their visit today! Kids can make festive crowns and picture frames for the special man in their lives.

### NEW Dover Adventure Playground Opening

SATURDAY, JUNE 24, 9:30am

The Dover Adventure Playground, located in Lower Henry Law Park adjacent to the Children's Museum of New Hampshire, is opening this summer and all are welcome! The playground will feature a life-size flat-bottomed gundalow boat, a net climber, swings and slides, a 3-story Garrison tower, a climbable fish sculpture and musical instruments.



We are part of the Blue Star Museum program, sponsored by People's United Bank, which means we offer **free admission to active & veteran military personnel and their families between Memorial Day and September 3** (We are closed on Labor Day).

## STEAM LAB

**"Playing with STEAM"**

Drop-in programs free with admission

## Summer Camps

July 24 - August 25, 2017

Choose from

**3-day camps for ages 4-6**

**Tuesday-Thursday, 9:15am-noon**

Members: \$85; Non-members: \$95

AND

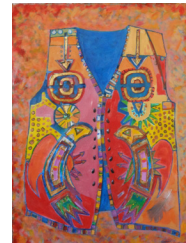
**5-day camps for ages 7-11**

**Monday-Friday, 9:15am-1pm**

Members: \$170; Non-members: \$190

Visit [childrens-museum.org](http://childrens-museum.org) to learn more about weekly camp themes

## GALLERY 6 ART EXHIBITION



*MOSAIC: Exploring Our Multicultural Neighborhood*  
**13 MOONS - AN ABENAKI**

**CHILD'S YEAR**

March 4 - Labor Day, 2017



Gallery 6 is supported by the New Hampshire State Council on the Arts and the Fuller Foundation.



## SUMMER HOURS:

Starting Monday, June 19 we are open 7 days a week!

Monday-Saturday, 10am-5pm and Sundays, Noon-5pm.

